

Stay Connected /Tuesday, September 11, 2012

Follow @pmnewsnigeria 32.1K followers

J'aime 25 757



Search in site...



First with Nigerian News | Published since 1994

[Home](#) [News](#) [Sports](#) [Entertainment](#) [Lifestyle](#) [Multimedia](#) [Business](#) [Politics](#) [Columns](#) [Editorial](#) [Opinions](#) [Birthdays](#)

[Directory](#) [Classifieds](#)

[ABOUT US](#) [CONTACT US](#)



Télécharger Google Chrome

[Home](#) > [News](#) > [Metro](#) > Truck Crushes 13 Commuters

Truck Crushes 13 Commuters

Published on August 30, 2012 by [pmnews](#) · 2 Comments

Thirteen of the 21 passengers trapped in a motor accident that occurred along the busy but narrow Benin-Auchi road, have been confirmed dead.

Two other buses said to be travelling on top speed also ran into the vehicles at the accident scene.

Photo Gallery



**Aregbesola
hosts Awolowo
descendants**



It was a tragic situation at the scene of the accident as human parts were seen trapped in the wreckage of the buses involved in the accident.

A 14-seater bus travelling from Benin allegedly collided with a fully loaded articulated truck coming from the Auchi end after the truck apparently lost control.

Edo Sector Commander of the Federal Road Safety Commission (FRSC) Ken Nwaegbe who confirmed the death of 13 commuters in the ill-fated buses, also confirmed the evacuation of six other passengers who were rushed to hospital for treatment.

A bus driver who identified himself simply as Osayande, said he was in the opposite direction with the truck, but he quickly veered off the highway when he suspected that the truck might have had brake failure as it was moving in a zigzag manner, adding that the truck crashed into the bus that was following him.

“When I saw the way the trailer was moving on the road, my mind was telling me that it might come straight at me, so I quickly veered off the road. The next thing I saw was the trailer crashing into the bus behind mine,” Osayande said.

Sympathisers at the scene of the accident blamed the incessant accident on the Benin/Abuja highway on the nature

Soin anti taches brunes

Dépigmentez naturellement grâce à l'acide tranexamique.

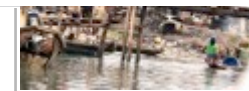
www.shopunt.com

French Brain Drain

Our Thoughts On French Academic Talent Leaving France Permanently!

www.carnetatlantique.com/

AdChoices



Photos: Life on the water front



In Pictures: PHCN Protest Unpaid Salaries



In Pictures: Pensioners Protest Over Unpaid Monthly Pension



In Pictures: Scene of DANA Air Craft In Lagos



of the road which they said was too narrow.

They called on the concerned authorities to urgently do something about it as it is the only gateway to the northern part of the country from Benin.

—Jethro Ibileke/Benin

You may also like -

- [13 die in Nigeria's ghastly road crash](#)
- [Re-Open Letter To Pastor E. A. Adeboye](#)
- [Two Feared Dead As Danfo Bus Collides With Truck](#)
- [Potholes On Inner Lagos Roads Need Urgent Attention](#)

J'aime 3

0

Tweet 0



Share:       

Posted by [pmnews](#) 1 week, 5 days ago on August 30, 2012, 3:52 pm. Filed under [Metro](#), [News](#). You can follow any responses to this entry through the [RSS 2.0](#). You can skip to the end and leave a response. Pinging is currently not allowed.

2 Comments for

"Truck Crushes 13 Commuters"

rebirth

August 30, 2012 - 3:58 pm



for how long will that road remain like that? when i was serving in the north, i saw how

Jobs in Nigeria

FULL-TIME **Factory Manager at SENCE Limited in Lagos** [Apply Now](#)

FULL-TIME **Floor Manager at DF Studios Limited in Abuja** [Apply Now](#)

FULL-TIME **Secretarial Staff (SE/08 /SSTF) at SENCE Limited in Lagos** [Apply Now](#)

FULL-TIME **Efik Teacher (SE/08/TCHR) at SENCE Limited in Lagos** [Apply Now](#)

FULL-TIME **Medical Representative at Swiss Pharma Nigeria Limited in Lagos and 16 other Locations** [Apply Now](#)

FULL-TIME **Hausa Teacher (SE/08/TCHR) at SENCE Limited in Lagos** [Apply Now](#)

FULL-TIME **Igbo Teacher (SE/08/TCHR) at SENCE Limited in Lagos** [Apply Now](#)

POST A JOB



University Of Lagos Students' Protest

errible the road was and still surprised its still that way. for how long will the innocent people suffer for the things that shuld have been done rightly. God help us.

REPLY

Judgement is for sure

August 30, 2012 - 6:38 pm



Rebirth, why should you be surprised that the road was still like that? Which part of the Nigerian roads is good? This is the situation we find ourselves, God has already helped us, it is our leaders we will cry to to help us. If you check federal government documents, you may not be surprised to hear that the Benin-Auchi road is a dual carriage. Shebi we had the opportunity of having a Minister of works just few years ago from Benin, what did he do to his state roads, not to talk of other areas? He cannot still account for the millions of Naira awarded for the Ore-Benin road during his tenure. Lets see where he will have his last breadth

REPLY

LEAVE A REPLY

Name (required)

Mail (will not be published) (required)

Website

POST COMMENT

Find Property in Nigeria

☒ For Sale ☐ To Rent

All States

Choose Area

Min Pri

to Max Pr

Search

Top Properties



N110 Million

5 5

Agungi, Discovery Gardens...



N4 Million

2 2

Kings Palace Estate, Igbe...



N6 Million

3 3

Kings Palace Estate, Igbe...



N45 Million

4 4

Chevy View Estate, 4 Emma...

List Your Property Powered By

Recent Entries

NDLEA Seizes N294m Heroin In Rugs

Woman Strangles Friend For Snatching Lover

Air Nigeria Passengers Abandoned In UK

Egyptian Maths Teacher Petitions Kano Gov, Education Minister

National Honours' List, An

Embarrassment'

FirstBank Holds EGM

Nigerian Banks Unreliable

—Suru Group Boss

Ondo State: Loyalty, Psycho

Politics And Media Criers

APGA: Between Extreme

Unction And Extinction

Making Quality Bread

Available To Nigerians

[ABOUT US](#) [CONTACT US](#) [RSS](#)