



(http://leadership.ng/wp-content/plugins/ad-manager/track-click.php?

out=http%3A%2F%2Fwww.wemabank.com%2Fdefault.aspx%3Futm_source%3Dwww.leadership.ng%26utm_medium%3DWeb_Banner%26utm_campaign%3DSelfPlaced_Web_Ads_NewspaperSites%2520http%3A%2F%2Fwww.wemabank.com%3Futm_source%3Dwww.leadership.ng%26utm_medium%3DWeb_Banner%26utm_campaign%3DSelfPlaced_Web_Ads_NewspaperSi&id=50)



IPING/NEWS/389887/MANY-STUDENTS-FEARED-DEAD-POTISKUM-BOMB-BLAST)



HOME (HTTP://LEADERSHIP.NG/)NEWS (HTTP://LEADERSHIP.NG/NEWS/)SIX DIE IN AUTO-CRASH ALONG BENIN/ASABA EXPRESSWAY



Hope For Stroke Patients
The Only Supplement
That Support
Neurological Functions!

Issele-Uku.

Residents, who spoke to LEADERSHIP Sunday, however, described the accident as unfortunate blaming FERMA for its non, challant attitude in road repairs on portions along the expressway.

While they called on the federal government as well as the state government to come to the aid of motorists, they, however, appealed to motorists to exercise caution while on the expressway especially where there are failed portions to ensure lives are not lost.

The public enlightenment officer of the FRSC, Julius Bassey, said the accident was unfortunate, saying that the driver, in his attempt to escape the pothole, veered out of its way leaving the bus to somersault in the bush.

He said that although some persons were fatally injured, but maintained that those who lost their lives have been deposited at the federal medical mortuary while those injured were being treated by medical experts.

Six Die In Auto-crash Along Benin/Asaba Expressway

Kola Eke Ogiugo (http://reporter/kola-eke-ogiugo/) — Nov 9, 2014 | 3 Comments (http://leadership.ng/news/389799/six-die-auto-crash-along-beninasaba-expressway#comments)

No fewer than six travellers in the early hours of yesterday lost their lives in a ghastly motor accident around Otulu after Issele-Asagba community along Benin-Asaba expressway.

Eyewitness said that the accident occurred when an 18 seater bus veered out of its way while trying to escape a deep pothole around Otulu community leaving the bus to somersault with the 18 passengers out of which six died on the spot while others were fatally injured and rushed by officials of the Federal Roads Safety Commission (FRSC) to Issele-Uku hospital.

Reports said the driver of the bus, though survived the accident, had his spinal cord broken and is, at the time of filing in this report, in a critical condition, while others, who sustained various degrees of injuries, are currently being treated at the government-owned hospital.

« Previous Article
(http://leadership.ng/news/389798/vote-incompetent-leaders-oshiohiole-tells-electorate)

Vote Out Incompetent Leaders,

Next Article »
(http://leadership.ng/news/389800/boko-haram-american-university-pledges-continue-operation)

Boko Haram: American University

3 CommentsLeadership NG

Sort by Best ▾ShareFavorite★

Join the discussion...

ABUBAKAR IBRAHIM • a day ago
Greetings to the general public,
NATIONAL AUTHORIZED CAR AUCTIONS/SALES
These cars were seized by government officials
at border and the time duration given to the owners to claim their cars
has elapse so they are been sold in a give away price.All you need do is
to call 07038628391 to place an order of your choice.....Contact name: OFFICER ABUBAKAR
INTERESTED BUYERS SHOULD PLEASE CONTACT US FOR PURCHASE AND IMMEDIATE
DELIVERY NATIONWIDE
• Toyota Land Cruiser-N450,000-900,0000
• Toyota Prado N430,000-1000000
• Toyota Corolla -N250,000-850,0000
• Toyota Camry -N200,000-N950,000
• Toyota Avenis - N200,000-N800,000
• Toyota Yaris - N300,000
• Toyota Avanza - N400,000
• Toyota RAV4 SUV -N400,000-1000000
• Toyota Hilus Pickup-N850,000
• Toyota Dyna Truck - N900,000

see more

Reply • Share ▾

Alhaji M. Jamu • a day ago
DANGOTE PROMO ON PRODUCTS
DUE TO THE REDUCTION OF CEMENT PRICE TO 1,000 NAIRA, CEMENT PROMO PRICE IS
NOW 840 NAIRA PER BAG
THE MANAGEMENT OF DANGOTE FACTORY WISH TO INFORM THE GENERAL
PUBLIC(INDIVIDUAL/DISTRIBUTORS) ON SALES OF VARIOUS PRODUCTS LISTED BELOW:
Contact Sales Manager ON 08059167471
DANGOTE CEMENT =N=840 PER BAG.

TweetsFollow

LEADERSHIP Newspaper
@LeadershipNGA
2015 Presidential Declaration: Jonathan To Unleash New Battle Slogan On Tuesday
goo.gl/50W8FU fb.me/LEXRdnd09
Expand

LEADERSHIP Newspaper
@LeadershipNGA
SHAMEFUL ACT: Father Of 5 Impregnates Teenage Girl
goo.gl/mg8196 fb.me/186ju51v
Expand

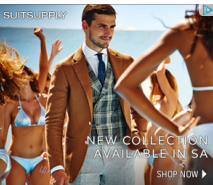
Tweet to @LeadershipNGA

Find us on Facebook

Leadership Newspapers
Like

312,873 people like Leadership Newspapers.

Facebook social plugin



Any Make ▾
Any Model ▾
MIN N ▾ MAX N ▾ Search

Toyota Sequoia
Lagos, N 5,000,000/- Neg.

Toyota Highlander
Lagos, N Negotiable

Acura MDX
Lagos, N 2,000,000/- Neg.

TweetsFollow

FRSC, NIGERIA
@FRSCNigeria
DELEGATION FROM HEAD OF SERVICE VISITS
FRSC HQ (10/11/2014)
Expand

FRSC, NIGERIA
@FRSCNigeria
Traffic Update on 10/11/14 at 08:30hrs.
There is normal traffic along these routes.
• Uyo-Ala
• Uyo-Abakki.
Please drive with care.
Expand

FRSC, NIGERIA
18h ▾
Tweet to @FRSCNigeria

